

## Monthly Weather Summary in Thailand May 2018

May 2018 was dominated by the southerly and southeasterly wind prevailed over Thailand almost the whole month coupled with the low pressure cell covered Myanmar during the beginning and the end of the month. Moreover, the westerly trough occasionally moved to cover the northern and upper northeastern parts accompanied with the periodically southwesterly wind prevailed the Andaman Sea and Thailand especially during late month. These conditions caused induced increase in rainfall increased both amount and distribution in all regions mention during period that considered as the beginning of the 2018 rainy season was May 26. Monthly rainfall was above normal i.e. northern part 34.4 mm (19%), northeastern part 16.1 mm (9%) and southern part (west coast) 22.2 mm (7%) while it was below normal in eastern part 81.0 mm (36%), central part 14.3 mm (8%), and southern part (east coast) 1.6 mm (1%). The accumulated rainfall this year up to May was 26 percent higher than normal. These induced temperature decreased almost the whole areas and mean temperatures over Thailand was 0.2 °C below normal. The details are as follows:

**1 – 10 May:** Due to the southerly and southeasterly wind prevailed over Thailand nearly the whole period with the active low pressure cell moved through the Gulf of Martaban to cover Myanmar during early period. Besides, a ridge of high pressure from China extended to cover upper Thailand and the South China Sea during early and late period associated with the westerly trough moved through the northern and upper northeastern parts on May 3-6. In addition, the southwesterly wind prevailed over the Andaman Sea and southern part during the second half of the period. These conditions caused isolated to scattered rain with heavy rainfall in some areas over upper Thailand except for fairly widespread to widespread rain and heavy to very heavy rainfall in some areas on May 1, 3 and 4. The highest daily rainfall was 100.0 mm at Pak Chong Agricultural Extension office, Nakhon Ratchasima province on May 4. However, hot weather remained nearly the whole areas and very hot weather in some areas of the upper Thailand during the second half of the period. The temperature at Mueang in Tak province reached a maximum of 40.0 °C on May 9. In southern Thailand, It had hot weather in some areas. Scattered to fairly widespread rain and heavy to very heavy rainfall in some areas was found mainly along east coast. The maximum daily rainfall of 95.3 mm was at Thung Tako in Chumphon on May 3.

**11 – 20 May:** Under the influence of westerly trough that moved to cover the northern and upper northeastern and the southeasterly wind prevailed over northeastern, eastern, central and southern parts during the first half of the period. After that the southerly and southeasterly wind over the mentioned areas. The weather in upper Thailand was scattered to fairly widespread rain nearly the whole period with heavy to very heavy rainfall in some areas. The highest daily rainfall was 125.3 mm at Mueang in Phitsanulok province on May 17. Thunderstorm with gusty wind occurred in Phayao and Udon Thani provinces on May 12 and Tak, Nakhon Ratchasima provinces on May 14 and Chiang Rai, Chai Nat provinces on May 15 and Sakhon Nakhon, Si Saket provinces on May 16 and Pharem, Maha Salakham provinces on May 17 and Uttaradit, Lamphang, Kamphaeng Phet, Si SAKet, Nakhon Ratchasima, Suphan Burin, Nakhon Sawan provinces on May 18 and Phayao, Nakhon Ratchasima, Sakaeo provinces on May 19. Although during this period, decreasing temperature was found in most of country from last period while hot weather remained nearly the whole period in northern, northeastern central and upper eastern parts. The maximum temperature was 38.7 °C at Mae Sot in

Tak province on May 17. In southern part, eastern coast experienced hot weather in some areas almost the whole period isolated to scattered rain with heavy to very heavy rainfall in some areas. While western coast experienced hot weather in some areas during early period and scattered to fairly widespread rain with heavy to very heavy rainfall almost the whole period. The maximum daily rainfall in southern part was 105.2 mm at Thung Yai in Nakhon Si Thammarat province on May 11.

**21 – 31 May:** During the first half of the period, the active southerly and southeasterly wind prevailed over northeastern, eastern central and southern parts. After that, the southwesterly wind prevailed over the Andaman Sea, northern and central parts of Thailand while the southeasterly wind blowing over the northeastern, eastern and the South China Sea. Moreover, the low pressure cell which covered the upper Bay of Bengal on May 28 moved to Myanmar on May 30. These conditions caused induced rainfall increased both amount and distribution in all regions from last period and temperature decreased in general but still hot weather for few days. The weather in upper Thailand was fairly widespread to widespread rain nearly the whole period with heavy to very heavy rainfall in some areas. The maximum daily rainfall in southern part was 120.0 mm at Phibun Rak in Udon Thani on May 21. Gusty wind occurred in Lop Buri, Chai Nat and Ang Thong provinces on May 21 and Mae Hong Son on May 23. Southern Thailand obtained fairly widespread to widespread rain nearly the whole period with heavy to very heavy rainfall in some areas. The maximum daily rainfall recorded in this period was 121.3 mm at Phuket Airport in Phuket on May 25.

---

**Note :** Rainfall, temperatures and natural disasters in this report were updated up to June 4, 2018.

Climatological Center  
Meteorological Development Division  
Meteorological Department

Monthly Current Report  
Rainfall and Accumulative Rainfall  
May 2018

Northern Thailand

Station	Temperature ( °c)		Rainfall (mm)		ccumulative rainfall (mm) Since 1 January	
	Mean	Above or below normal	Actual	Above or below normal	Actual	Above or below normal
Chiang Rai	27.0	-0.1	495.4	282.0	682.2	321.4
Mae Hong Son	28.8	-0.1	157.0	-17.5	215.0	-51.9
Phayao	27.5	-0.3	347.6	167.9	590.8	276.8
Chiang Mai	28.5	0.3	196.6	34.6	243.8	-6.4
Tha Wang Pha	28.0	-0.1	253.5	70.5	514.3	179.3
Nan	28.4	-0.2	104.3	-73.0	296.3	-29.6
Lamphun	28.2	-0.5	265.6	110.8	390.3	170.2
Lampang	28.5	-0.3	284.3	123.9	456.4	195.7
Mae Sariang	28.7	0.3	218.6	56.3	242.3	13.1
Phrae	28.8	-0.2	126.0	-52.1	440.5	138.1
Uttaradit	29.6	-0.2	280.4	50.4	376.0	31.6
Bhumibol Dam	28.1	-1.1	284.2	86.6	341.7	47.4
Tak	28.8	-0.8	213.4	38.5	332.4	77.0
Mae Sot	28.8	0.9	97.7	-76.5	120.3	-124.1
Umphang	25.9	0.3	162.0	-33.0	348.6	-11.5
Phitsanulok	29.6	-0.3	273.2	102.3	376.8	106.1
Lom Sak	28.3	-0.3	84.8	-66.0	297.7	18.0
Phetchabun	28.8	0.0	160.3	-2.5	384.2	75.8
Wichian Buri	29.3	-0.1	109.0	-49.1	348.6	29.7
Kamphaeng Phet	29.3	0.1	129.5	-66.0	339.8	39.4
Over the area	28.4	-0.2	212.2	34.4 19%	366.9	74.7 26%

Northeastern Thailand

Station	Temperature ( °c)		Rainfall (mm)		ccumulative rainfall (mm) Since 1 January	
	Mean	Above or below normal	Actual	Above or below normal	Actual	Above or below normal
Nong Khai	28.8	0.2	334.3	109.4	553.2	179.5
Loei	26.9	-0.8	235.7	36.4	447.9	84.3
Udon Thani	28.5	-0.4	245.1	46.6	448.9	98.3
Nakhon Phanom	28.7	0.3	195.3	-61.8	442.3	-10.0
Sakon Nakhon	28.1	-0.3	133.4	-94.2	294.4	-118.0
Mukdahan	28.6	-0.2	185.2	-14.3	342.5	6.7
Khon Kaen	28.5	-0.4	163.1	-5.6	403.7	77.9
Kosum Phisai	28.9	-0.4	217.7	56.2	475.6	154.8
Roi Et	28.9	-0.1	217.0	30.9	390.6	64.6
Chaiyaphum	28.7	-0.2	246.3	106.1	332.4	29.5
Ubon Ratchathani	29.2	0.2	170.5	-38.1	409.3	66.0
Tha Tum	29.0	-0.5	232.0	59.7	336.5	12.1
Surin	28.9	0.1	206.3	26.5	337.0	1.2
Nakhon Ratchasima	28.7	-0.4	132.2	-21.9	408.0	120.3
Chok Chai	28.5	-0.3	177.9	28.9	364.6	78.0
Nang Rong	28.2	-0.6	159.2	-7.4	332.1	11.7
Over the area	28.6	-0.2	203.2	16.1 9%	394.9	53.5 16%

- NOTES :
- 1) Mean temperature is the average of daily dry-bulb temperature
  - 2) "T" is trace, rainfall amount less than 0.1 mm.
  - 3) "blank" is incomplete data.
  - 4) Temperature and rainfall are preliminary data.

Monthly Current Report  
Rainfall and Accumulative Rainfal  
May 2018

Central Thailand

Station	Temperature ( °c)		Rainfall (mm)		Accumulative rainfall (mm) Since 1 January	
	Mean	Above or below normal	Actual	Above or below normal	Actual	Above or below normal
Nakhon Sawan	29.8	-0.2	139.4	-11.3	255.6	-8.1
Bua Chum	28.6	-0.7	176.0	39.8	608.8	329.6
Lop Buri	29.5	-0.1	193.7	46.6	499.7	226.4
Suphan Buri	30.0	0.2	137.7	23.4	293.9	101.0
Thong Pha Phum	28.5	0.4	141.7	-85.8	329.1	-68.4
Kanchanaburi	29.5	-0.2	146.8	1.5	295.4	21.1
Bangkok Airport	28.9	-0.9	254.1	46.5	660.7	303.8
Bangkok Metropolis	29.6	-0.3	73.3	-174.4	580.0	165.5
Over the area	29.3	-0.2	157.8	-14.3 -8%	440.4	133.8 44%

Eastern Thailand

Station	Temperature ( °c)		Rainfall (mm)		Accumulative rainfall (mm) Since 1 January	
	Mean	Above or below normal	Actual	Above or below normal	Actual	Above or below normal
Prachin Buri	29.7	0.4	78.0	-153.0	445.8	23.4
Kabin Buri	28.6	-0.3	104.5	-87.8	767.2	390.7
Aranyaprathet	29.3	0.1	134.0	-34.3	440.9	101.5
Chon Buri	29.1	-0.7	171.4	-3.9	464.6	143.5
Ko Sichang	28.9	-0.7	89.4	-45.0	519.5	231.6
Pattaya	28.9	-0.3	38.1	-110.2	345.0	49.5
Sattahip	28.7	-0.9	101.1	-70.8	430.1	75.5
Rayong	29.3	-0.4	152.7	-45.9	434.1	26.4
Chanthaburi	28.6	0.3	414.6	22.1	955.2	310.5
Khlong Ya	28.4	0.2	145.2	-281.5	624.8	-225.8
Over the area	29.0	-0.2	142.9	-81.0 -36%	542.7	112.6 26%

- NOTES :
- 1) Mean temperature is the average of daily dry-bulb temperature
  - 2) "T" is trace, rainfall amount less than 0.1 mm.
  - 3) "blank" is incomplete data.
  - 4) Temperature and rainfall are preliminary data.

Monthly Current Report  
Rainfall and Accumulative Rainfall  
May 2018

Southern Thailand, east coast

Station	Temperature ( °c)		Rainfall (mm)		Accumulative rainfall (mm) Since 1 January	
	Mean	Above or below normal	Actual	Above or below normal	Actual	Above or below normal
Phetchaburi	29.6	0.2	57.4	-42.1	301.2	116.4
Hua Hin	29.2	-0.1	76.6	-32.3	379.2	142.9
Prachuap Khiri Khan	29.1	0.2	78.4	-48.5	330.2	29.8
Chumphon	28.3	0.3	90.6	-100.2	525.5	47.6
Surat Thani	27.9	0.2	189.2	11.2	541.7	217.2
Ko Samui	28.5	-0.4	122.2	-33.7	631.4	171.0
Nakhon Si Thammarat	27.9	-0.3	109.5	-64.3	522.3	-61.8
Songkhla	28.7	-0.1	151.2	31.6	516.7	138.9
Hat Yai Airport	27.6	-0.2	220.4	72.7	453.8	34.2
Pattani Airport	28.5	0.3	220.2	82.7	550.5	206.1
Narathiwat	28.4	0.2	247.9	105.8	829.1	341.5
Over the area	28.5	0.0	142.1	-1.6 -1%	507.4	125.7 33%

Southern Thailand, west coast

Station	Temperature ( °c)		Rainfall (mm)		Accumulative rainfall (mm) Since 1 January	
	Mean	Above or below normal	Actual	Above or below normal	Actual	Above or below normal
Ranong	27.9	0.2	471.0	-25.6	865.0	124.6
Takua Pa	27.9	0.0	438.4	0.9	1277.5	434.9
Phuket	29.0	0.2	235.2	-24.3	502.5	-27.6
Phuket Airport	28.8	0.4	335.3	53.8	916.5	317.3
Ko Lanta	28.6	-0.1	271.4	26.6	695.2	236.0
Trang Airport	27.6	-0.1	264.8	47.3	584.7	90.8
Satun	27.6	-0.5	310.3	77.0	544.6	-83.7
Over the area	28.2	0.0	332.3	22.2 7%	769.4	156.0 25%

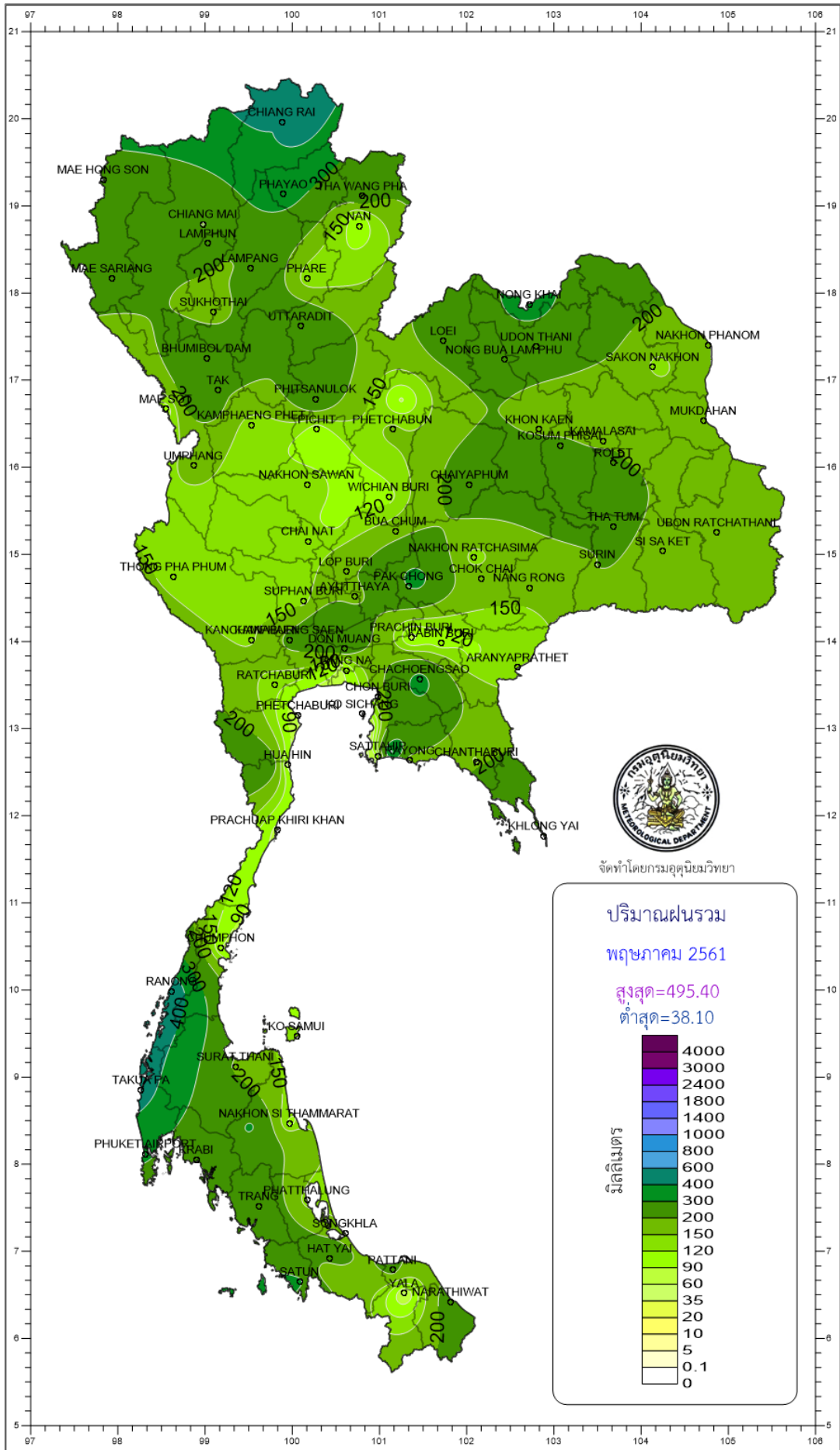
- NOTES :
- 1) Mean temperature is the average of daily dry-bulb temperature
  - 2) "T" is trace, rainfall amount less than 0.1 mm.
  - 3) "blank" is incomplete data.
  - 4) Temperature and rainfall are preliminary data.

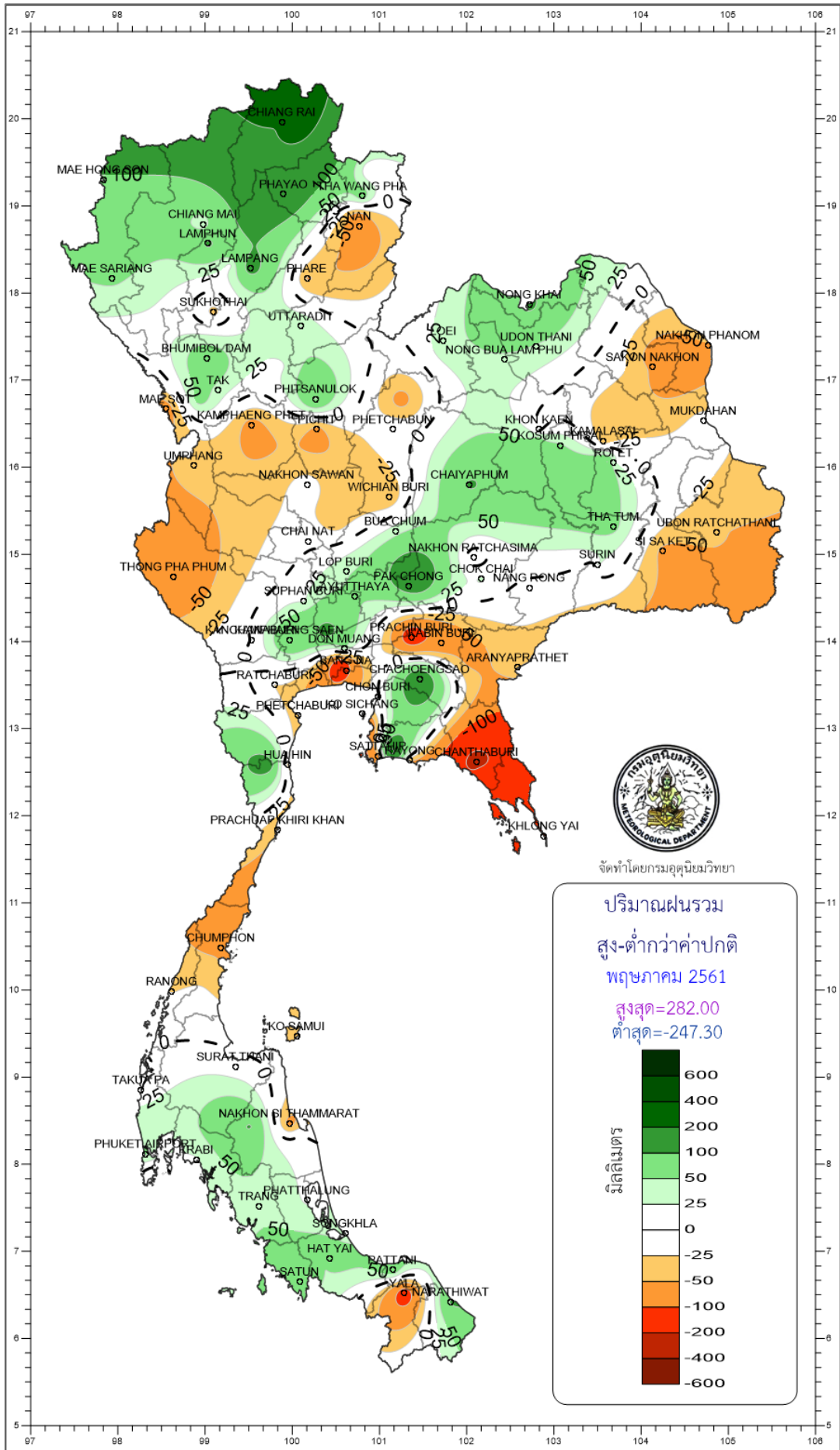
**Monthly Current Report**

**May 2018**

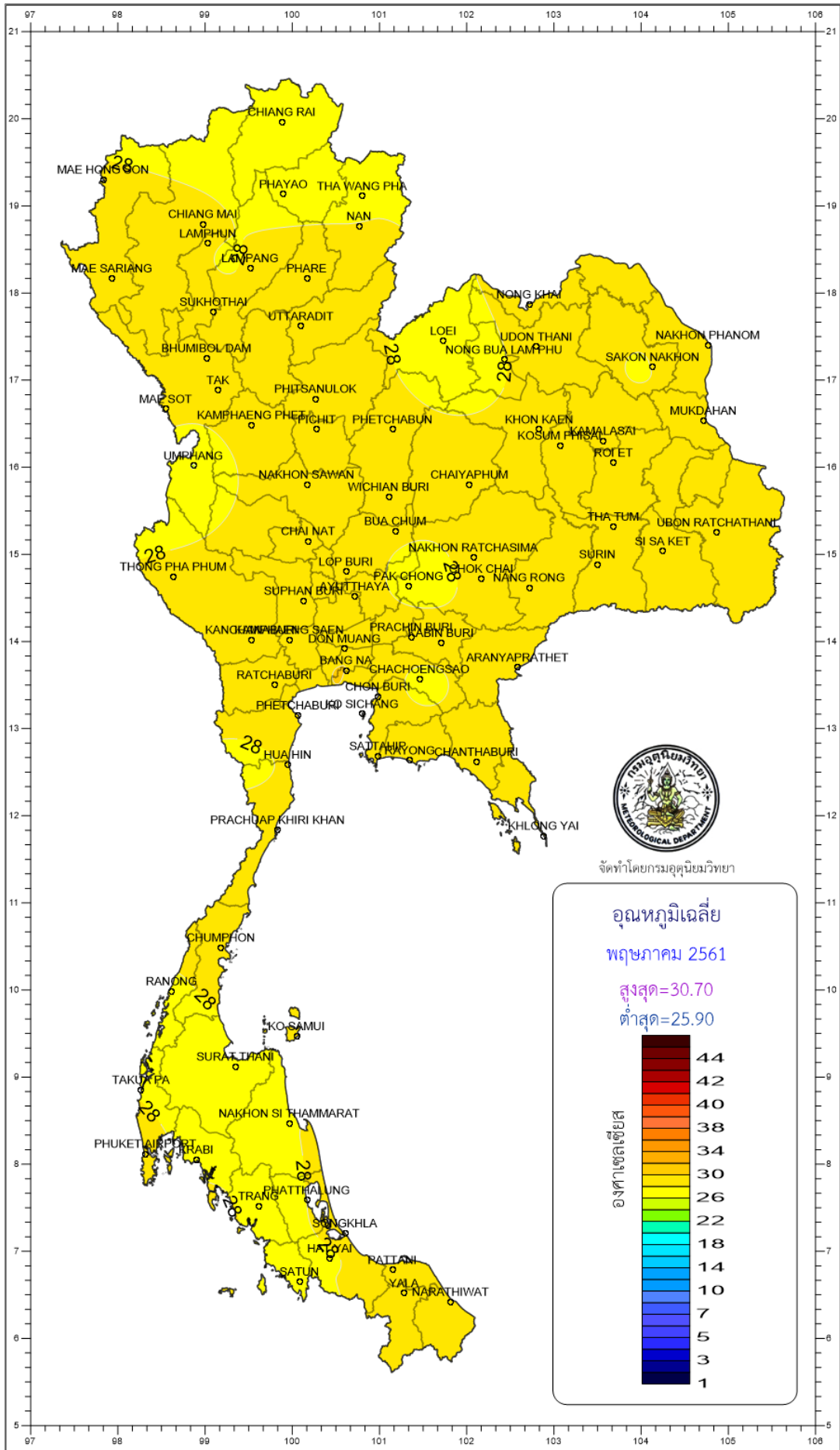
Region	Station	Temperature (°c)		Rainfall (mm)		Accumulative rainfall (mm) Since 1 January	
		Mean	Above or below normal	Actual	Above or below normal	Actual	Above or below normal
North	Chiang Rai	27.0	-0.1	495.4	282.0	682.2	321.4
	Mae Hong Son	28.8	-0.1	157.0	-17.5	215.0	-51.9
	Phayao	27.5	-0.3	347.6	167.9	590.8	276.8
	Chiang Mai	28.5	0.3	196.6	34.6	243.8	-6.4
	Tha Wang Pha	28.0	-0.1	253.5	70.5	514.3	179.3
	Nan	28.4	-0.2	104.3	-73.0	296.3	-29.6
	Lamphun	28.2	-0.5	265.6	110.8	390.3	170.2
	Lampang	28.5	-0.3	284.3	123.9	456.4	195.7
	Mae Sariang	28.7	0.3	218.6	56.3	242.3	13.1
	Phrae	28.8	-0.2	126.0	-52.1	440.5	138.1
	Uttaradit	29.6	-0.2	280.4	50.4	376.0	31.6
	Bhumibol Dam	28.1	-1.1	284.2	86.6	341.7	47.4
	Tak	28.8	-0.8	213.4	38.5	332.4	77.0
	Mae Sot	28.8	0.9	97.7	-76.5	120.3	-124.1
	Umphang	25.9	0.3	162.0	-33.0	348.6	-11.5
	Phitsanulok	29.6	-0.3	273.2	102.3	376.8	106.1
	Lom Sak	28.3	-0.3	84.8	-66.0	297.7	18.0
	Phetchabun	28.8	0.0	160.3	-2.5	384.2	75.8
	Wichian Buri	29.3	-0.1	109.0	-49.1	348.6	29.7
Kamphaeng Phet	29.3	0.1	129.5	-66.0	339.8	39.4	
Northeast	Nong Khai	28.8	0.2	334.3	109.4	553.2	179.5
	Loei	26.9	-0.8	235.7	36.4	447.9	84.3
	Udon Thani	28.5	-0.4	245.1	46.6	448.9	98.3
	Nakhon Phanom	28.7	0.3	195.3	-61.8	442.3	-10.0
	Sakon Nakhon	28.1	-0.3	133.4	-94.2	294.4	-118.0
	Mukdahan	28.6	-0.2	185.2	-14.3	342.5	6.7
	Khon Kaen	28.5	-0.4	163.1	-5.6	403.7	77.9
	Kosum Phisai	28.9	-0.4	217.7	56.2	475.6	154.8
	Roi Et	28.9	-0.1	217.0	30.9	390.6	64.6
	Chaiyaphum	28.7	-0.2	246.3	106.1	332.4	29.5
	Ubon Ratchathani	29.2	0.2	170.5	-38.1	409.3	66.0
	Tha Tum	29.0	-0.5	232.0	59.7	336.5	12.1
	Surin	28.9	0.1	206.3	26.5	337.0	1.2
	Nakhon Ratchasima	28.7	-0.4	132.2	-21.9	408.0	120.3
Chok Chai	28.5	-0.3	177.9	28.9	364.6	78.0	
Nang Rong	28.2	-0.6	159.2	-7.4	332.1	11.7	
Central	Nakhon Sawan	29.8	-0.2	139.4	-11.3	255.6	-8.1
	Bua Chum	28.6	-0.7	176.0	39.8	608.8	329.6
	Lop Buri	29.5	-0.1	193.7	46.6	499.7	226.4
	Suphan Buri	30.0	0.2	137.7	23.4	293.9	101.0
	Thong Pha Phum	28.5	0.4	141.7	-85.8	329.1	-68.4
	Kanchanaburi	29.5	-0.2	146.8	1.5	295.4	21.1
	Bangkok Airport	28.9	-0.9	254.1	46.5	660.7	303.8
	Bangkok Metropolis	29.6	-0.3	73.3	-174.4	580.0	165.5
East	Prachin Buri	29.7	0.4	78.0	-153.0	445.8	23.4
	Kabin Buri	28.6	-0.3	104.5	-87.8	767.2	390.7
	Aranyaprathet	29.3	0.1	134.0	-34.3	440.9	101.5
	Chon Buri	29.1	-0.7	171.4	-3.9	464.6	143.5
	Ko Sichang	28.9	-0.7	89.4	-45.0	519.5	231.6
	Pattaya	28.9	-0.3	38.1	-110.2	345.0	49.5
	Sattahip	28.7	-0.9	101.1	-70.8	430.1	75.5
	Rayong	29.3	-0.4	152.7	-45.9	434.1	26.4
	Chanthaburi	28.6	0.3	414.6	22.1	955.2	310.5
Khlung Yai	28.4	0.2	145.2	-281.5	624.8	-225.8	
South (East Coast)	Phetchaburi	29.6	0.2	57.4	-42.1	301.2	116.4
	Hua Hin	29.2	-0.1	76.6	-32.3	379.2	142.9
	Prachuap Khiri Khan	29.1	0.2	78.4	-48.5	330.2	29.8
	Chumphon	28.3	0.3	90.6	-100.2	525.5	47.6
	Surat Thani	27.9	0.2	189.2	11.2	541.7	217.2
	Ko Samui	28.5	-0.4	122.2	-33.7	631.4	171.0
	Nakhon Si Thammarat	27.9	-0.3	109.5	-64.3	522.3	-61.8
	Songkhla	28.7	-0.1	151.2	31.6	516.7	138.9
	Hat Yai Airport	27.6	-0.2	220.4	72.7	453.8	34.2
	Pattani Airport	28.5	0.3	220.2	82.7	550.5	206.1
	Narathiwat	28.4	0.2	247.9	105.8	829.1	341.5
South (West Coast)	Ranong	27.9	0.2	471.0	-25.6	865.0	124.6
	Takua Pa	27.9	0.0	438.4	0.9	1277.5	434.9
	Phuket	29.0	0.2	235.2	-24.3	502.5	-27.6
	Phuket Airport	28.8	0.4	335.3	53.8	916.5	317.3
	Ko Lanta	28.6	-0.1	271.4	26.6	695.2	236.0
	Trang Airport	27.6	-0.1	264.8	47.3	584.7	90.8
	Satun	27.6	-0.5	310.3	77.0	544.6	-83.7
Over the area	28.6	-0.2	195.5	2.2	466.3	97.5	
				1%		26%	

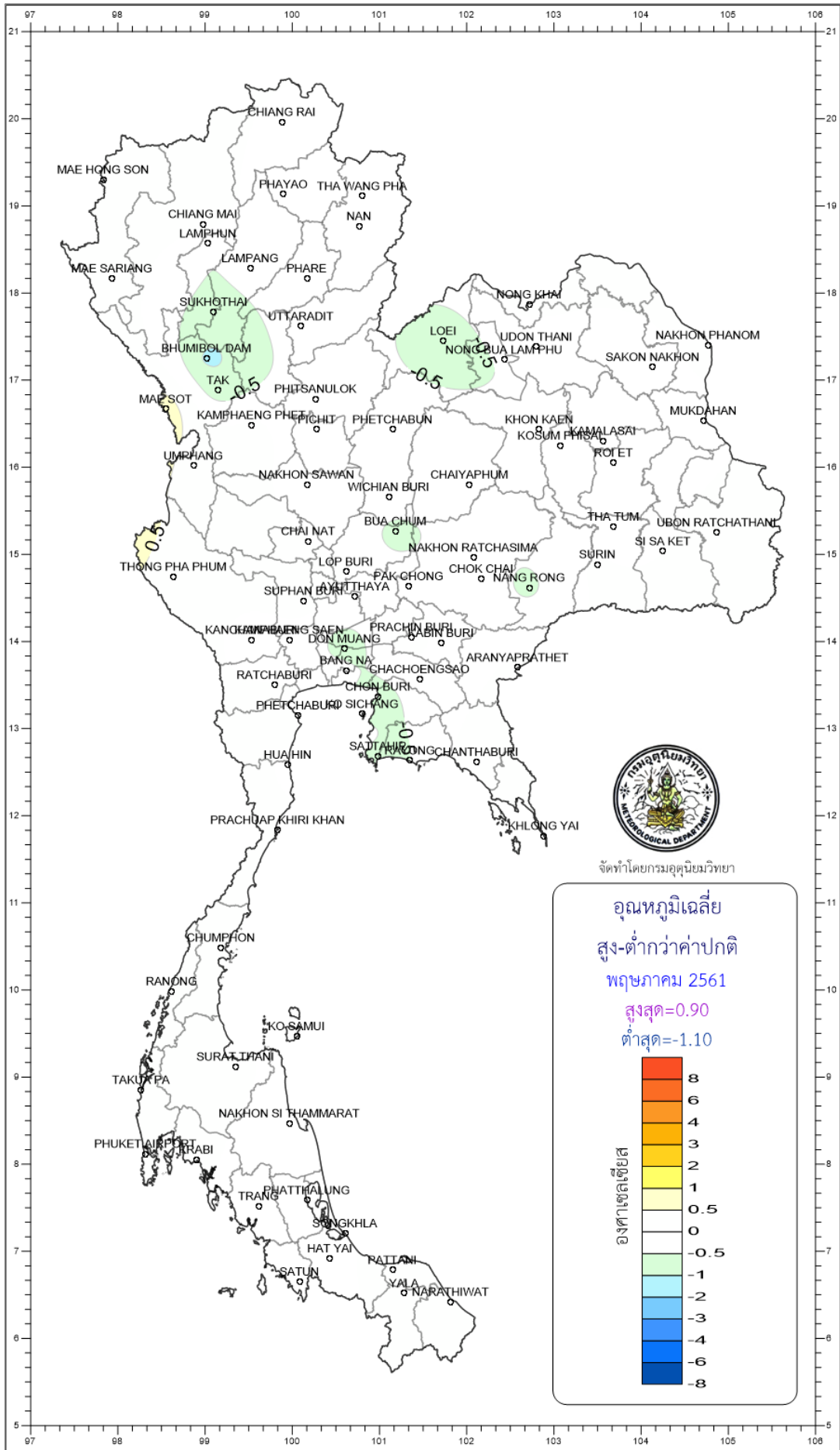
- NOTES :
- 1) Mean temperature is the average of daily dry-bulb temperature
  - 2) "T" is trace, rainfall amount less than 0.1 mm.
  - 3) "blank" is incomplete data.
  - 4) Temperature and rainfall are preliminary data.









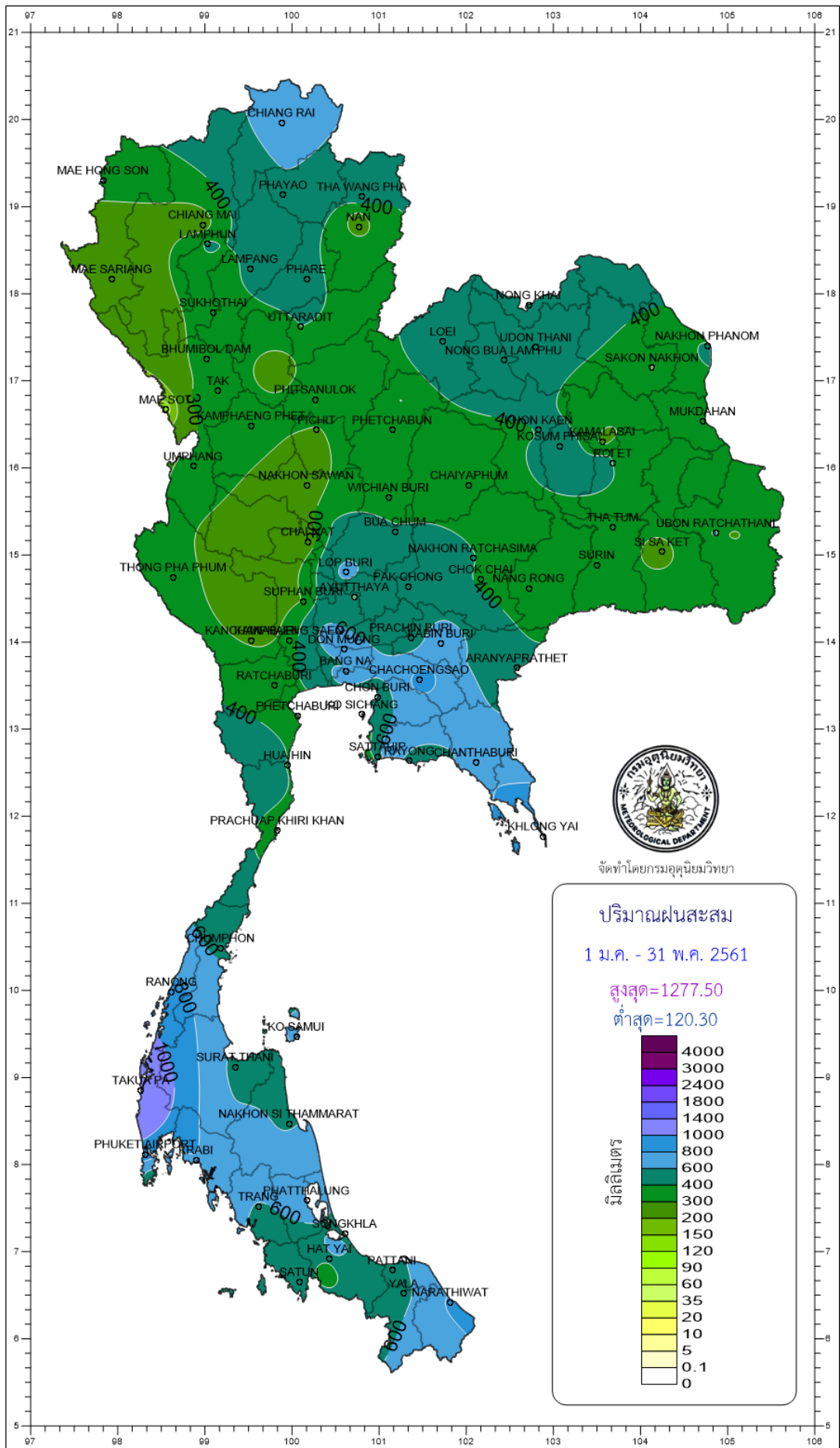


จัดทำโดยกรมอุตุนิยมวิทยา

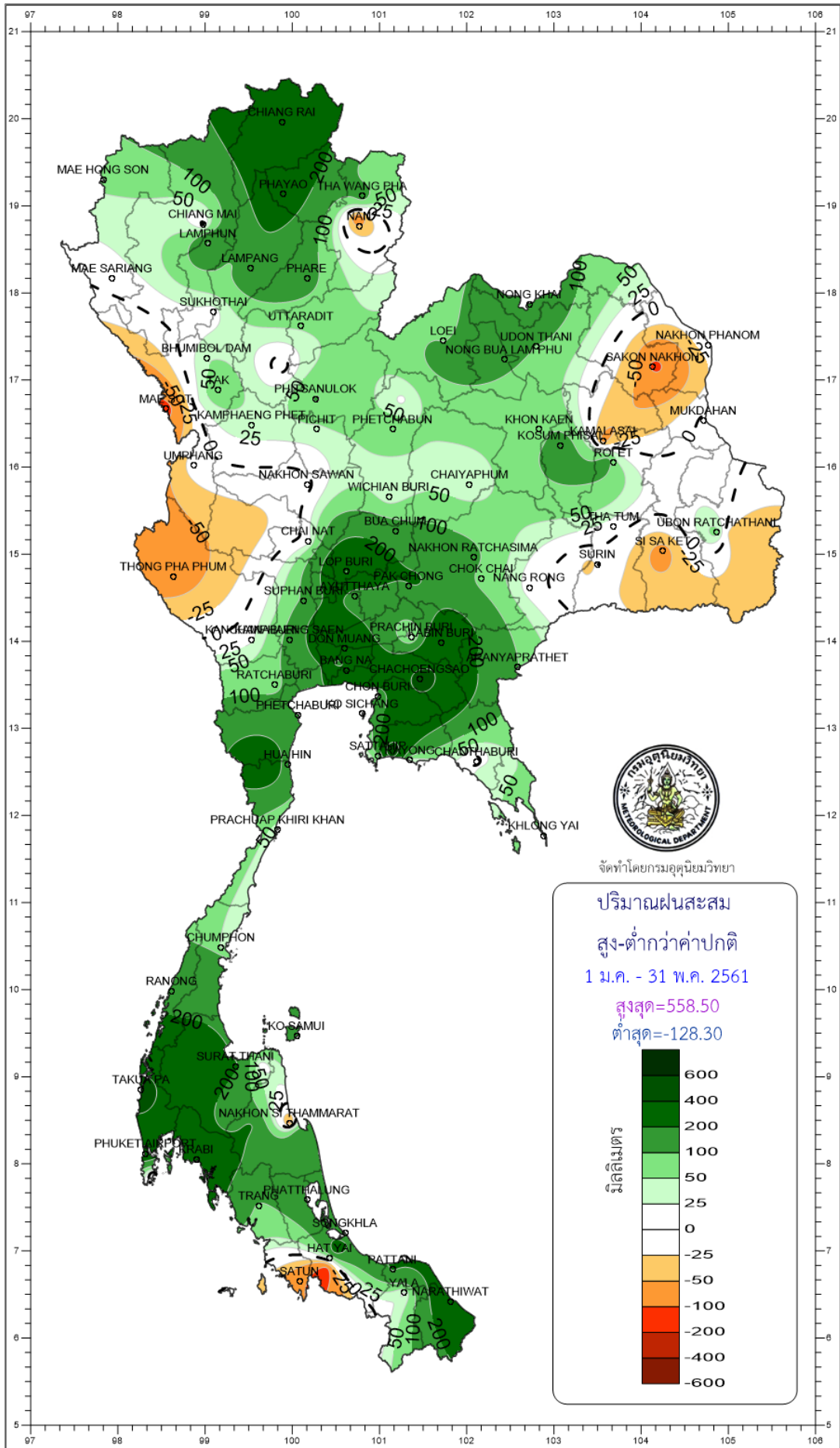
อุณหภูมิจเฉลี่ย  
สูง-ต่ำกว่าค่าปกติ  
พฤษภาคม 2561  
สูงสุด=0.90  
ต่ำสุด=-1.10

องศาเซลเซียส

8
6
4
3
2
1
0.5
0
-0.5
-1
-2
-3
-4
-6
-8



จัดทำโดยกรมอุตุนิยมวิทยา



จัดทำโดยกรมอุตุนิยมวิทยา